



## Delta Alliance will take part in these upcoming events:

### 9 – 15 June 2010, World Expo, Shanghai

Launch of World Estuary Alliance, and Joint Scientific Committee Meeting  
World Estuary Alliance and Delta Alliance will co-host a conference to celebrate the launch of the World Estuary Alliance and bring together partners from the two initiatives. The first meeting of the joint World Estuary Alliance / Delta Alliance Scientific Committee will take place here.

### 29 September – 1 October 2010, Deltas in Times of Climate Change Conference, Rotterdam

Launch of Delta Alliance, and meeting of the Scientific Committee  
Delta Alliance will be launched during this international conference that focuses on knowledge sharing and cooperation between river delta regions and disciplines.

## If you want to join Delta Alliance and for more information

**Katherine Trajan, Project Officer**

**Phone:** +31 (0)31 748 2713

**Mobile:** +31 (0)64 591 6563

**E-mail:** [katherine.trajan@wur.nl](mailto:katherine.trajan@wur.nl)

**www.deltalliance.org**

Delta Alliance  
P.O. Box 47, 6700 AA Wageningen

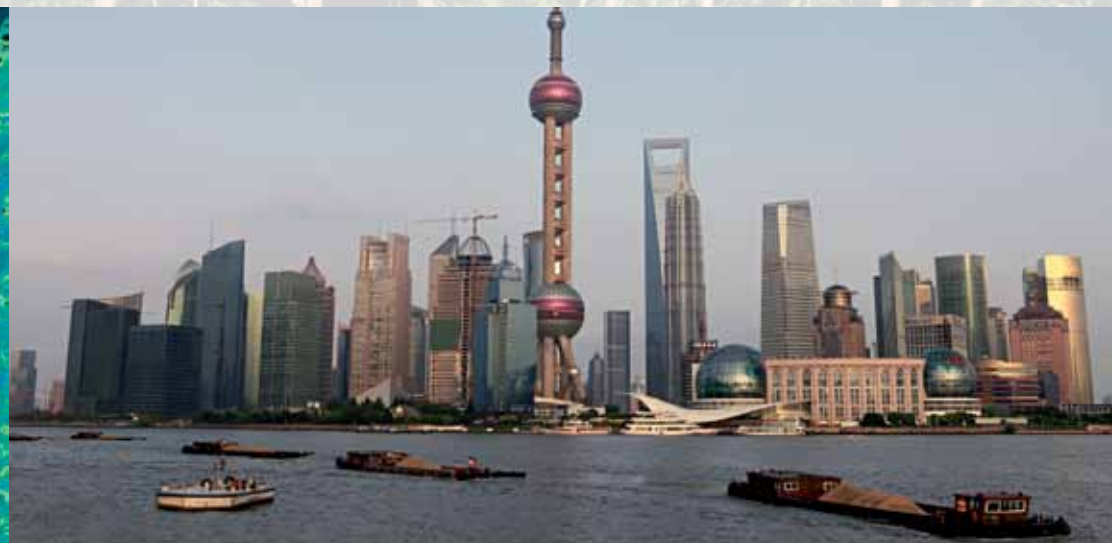
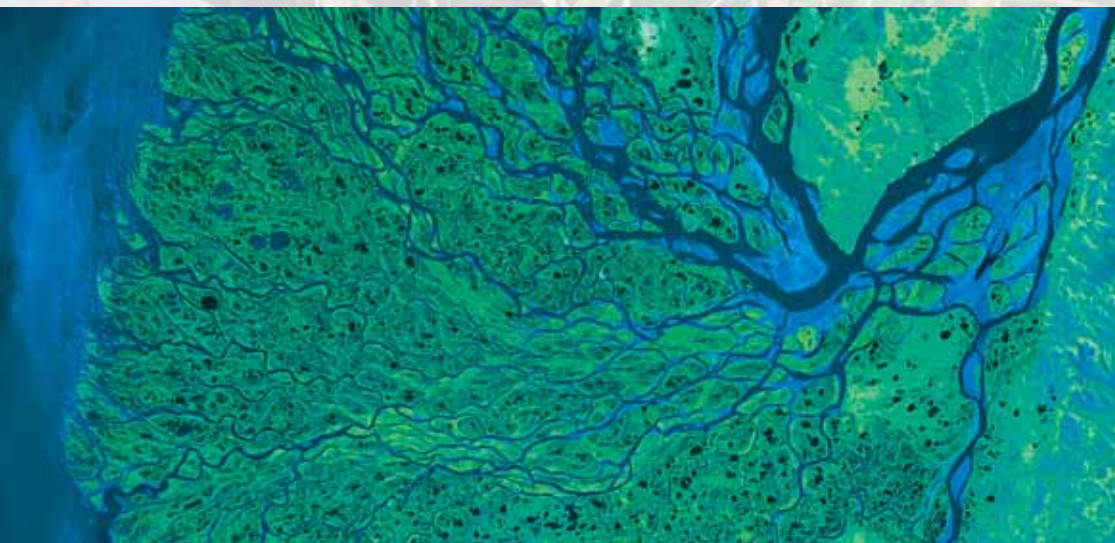
Working together on safe, vital and sustainable deltas in times of climate change.

Connecting  
Delta Cities

**WEA**  
World Estuary Alliance

## For the resilience of river deltas worldwide

**Delta Alliance is an emerging international network devoted to successful responses to the most critical present and future problems facing river delta regions worldwide**



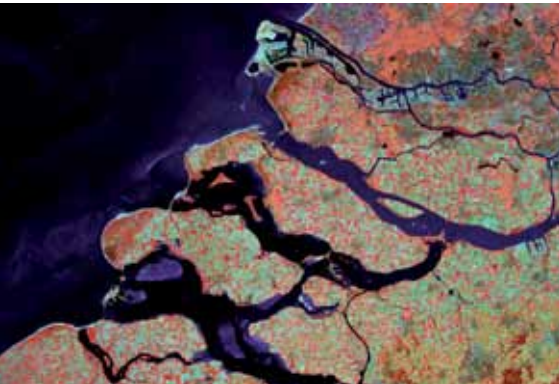


River deltas regions are some of the **wealthiest** places in the world, drawing large and increasing populations with their rich environmental resources and strong economic potentials; they are **hubs** of innovation, biodiversity, industrial and agricultural productivity, and home to some of the world's fastest **growing** cities.

**Climate change** is expected to **increase** the severity of many of the problems faced in river deltas and make addressing the vulnerabilities of river delta regions truly urgent. New knowledge must be **developed** in order to respond to levels of stress and a climate that these regions have never dealt with in the past.

Delta Alliance is being built with partners in California, Indonesia, Vietnam, and the Netherlands. Once established, Delta Alliance will expand to include additional locations within the network to benefit from the wealth of information available in other river delta locations.

## The First Four



### San Francisco Bay and Delta, California, USA

- Largest estuary on the west coast of North America
- More than 95% of the original tidal marshes have been leveled, now protecting farmland, communities, and infrastructure
- Supplies water for 23 million people and over 2.8 million hectares of farmland

### Rhine Delta, the Netherlands

- Houses large cities and industrial areas for centuries, but is not immune to problems faced by deltas. In 1953 dikes failed, flooding huge areas of land
- Sea level rise expected by 2050 will increase the risk of flooding in the port city of Rotterdam by a factor of 10

### Mekong and Red River Deltas, Vietnam

- Mekong consists of 5.5 million hectares of land
- Most inhabitants are rural farmers/fishers and they produce rice fish and shrimp
- The smaller Red River Delta is more densely populated and developed

### Ciliwung River Delta, Jakarta, Indonesia

- 13 rivers run through Jakarta, a city of 8.5 million inhabitants
- Jakarta is the most vulnerable region in South East Asia to the impacts of climate change
- The land beneath Jakarta is subsiding at a rate of 1 – 10 cm per year



Delta regions are also highly **stressed** areas, with great competition for land and water use, and experiencing impacts from all activities occurring in the river basin. River deltas are vulnerable to complex problems such as flooding, subsidence, and salt water intrusion. Human impacts increase their **vulnerability** by reducing natural resilience, introducing additional problems and devastating vital ecosystems. Both natural and human-built capital are at **risk** in river delta regions, making their protection essential.

The experiences and research from across river deltas must be **shared**, and collaborative research must be undertaken to **support** delta regions in responding quickly and effectively to their mounting challenges.



## Objectives

The overarching objective of Delta Alliance is to support the development and dissemination of new knowledge on how river delta regions can respond to the challenges facing deltas, in particular those that come with a changing climate.

The specific objectives of the network are:

- to coordinate and stimulate the development of innovative solutions and the dissemination of existing and emerging knowledge;
- to increase international recognition of deltas as specifically vulnerable areas and of the urgent need for international action towards adaptation measures.

We will achieve this through international research collaboration, multi-stakeholder dialogue, and information dissemination in a network of dedicated individuals and organizations.